

Sonne im Klangspiegel der Planeten

Cornelius Hummel (2001)

♩ = 50 - 60

Prélude für Orchester

The score is divided into two systems. The first system covers measures 1 to 54, and the second system covers measures 55 to 108. The tempo is marked as ♩ = 50 - 60. The key signature is one sharp (F#), and the time signature is 4/4. The score includes parts for the following instruments:

- Flöte 1, Flöte 2, Flöte 3 (Picc. 1), Flöte 4 (Picc. 2)
- Klarinette 1 in B, Klarinette 2 in B, Klarinette 3 in B, Baßklarinetten in B
- Fagott
- Horn in F 1, Horn in F 2, Horn in F 3
- Trompete 1 in B, Trompete 2 in B, Trompete 3 in B
- Posaune, Tuba
- Pauken
- Violine 1, Violine 2, Violine 3, Violine 4, Violine 5, Violine 6
- Viola 1, Viola 2
- Violoncello 1, Violoncello 2
- Kontrabass

The score features a wide range of dynamics, including *pppp*, *pp*, *p*, *mf*, *f*, *ff*, and *fff*. It also includes articulations such as *con sord.*, *senza sord.*, *div.*, and *gliss.*. The woodwinds and strings play melodic lines, while the brass and percussion provide harmonic support and rhythmic drive. The score is a complex and detailed orchestral work.

This page contains an orchestral score for a section marked with a boxed '1' at the top. The score is written for a variety of instruments, including woodwinds, brass, strings, and percussion. It features dynamic markings such as *pp*, *p*, *mf*, *f*, and *fff*, along with performance instructions like *gliss.*, *Becken mit Bogen gestrichen*, and *extr. sul ponticello*. The music is arranged in systems, with each instrument's part on a separate staff. The piece transitions between 5/4 and 4/4 time signatures.

Instrument List: Fl. 1, Fl. 2, Kl. 1, Kl. 2, B.-Kl., Fg., Hrn. 1, Hrn. 2, Hrn. 3, Trp. 1, Trp. 2, Trp. 3, Pos., Tb., Pk., Perc., Vl. 1, Vl. 2, Vl. 3, Vl. 4, Vl. 5, Vl. 6, Vla. 1, Vla. 2, Vc. 1, Vc. 2, Kb.

Dynamic Markings: *pp*, *p*, *mf*, *f*, *fff*, *mp*, *sf*, *ppp*

Performance Instructions: *gliss.*, *Becken mit Bogen gestrichen*, *l.v.*, *extr. sul ponticello (mit wenig Bogendruck möglichst viele Obertöne erzeugen)*, *extr. sul ponticello (siehe Cello 1)*, *extr. sul pont. (s. Cello 1)*

Time Signatures: 5/4, 4/4

(Jupiter)

19

Fl. 1 *p* *mf* *f* *p*

Fl. 2 *mf* *f*

Fl. 3 *p* *f* *p* (Saturn)

Fl. 4 *p* *f* *pp*

Kl. 1 (Erde) *pp* *mp* *pp*

Kl. 2 *p* *f*

Kl. 3 (Mars) *mf* *pp*

B.-Kl. (Venus) *p* *mf* *pp*

Fg. *pp* *p* *pp*

Hrn. 1 (Sonne) *p* *mf*

Hrn. 2 (Merkur) *pp* *mp*

Hrn. 3

Trp. 1 *mp* *f*

Trp. 2 con sord. (Uranus) (harmon) *p*

Perc. *pp*

VI. 1 *p*

VI. 2 *f* *p*

VI. 3 *pp* *p*

VI. 4 *p*

VI. 5 *f* *p*

VI. 6 *p*

Vla. 1 *pp* *p*

Vla. 2 *p*

Vc. 1 ord. *pp* *p*

Vc. 2 ord. *pp* *p*

Kb. *pp* *p*

27

Fl. 1

Fl. 2

Fl. 3

Fl. 4

Kl. 1

Kl. 2

Kl. 3

B.-Kl.

Fg.

Hrn. 1

Hrn. 2

Hrn. 3

Trp. 1

Trp. 2

Trp. 3

Pos.

Tb.

Pk.

Perc.

VI. 1

VI. 2

VI. 3

VI. 4

VI. 5

VI. 6

Vla. 1

Vla. 2

Vc. 1

Vc. 2

Kb.

p

mf

f

pp

ppp

sf

senza sord.

(Neptun)

(Pluto)

con sord. (harmon)

gliss.

Klangschale (eventuell elektronisch verstärkt)

35

Fl. 1 *f* *p* *f* *f*

Fl. 2 *f* *pp* *p* *f*

Fl. 3 *f* *p* *f* *p* *f* *p* *f*

Fl. 4 *f* *p* *f* *p* *f* *p* *f*

Kl. 1 *p* *mf* *p*

Kl. 2 *p*

Kl. 3 *mf* *pp* *p* *mf* *p*

B.-Kl. *pp* *p* *mp* *p* *mf*

Fg. *p* *p*

Hrn. 1 *f* *p* *f*

Hrn. 2 *mf* *p* *f*

Hrn. 3 *mf* *p* *f*

Trp. 1 *pp* *mf* *p* *p*

Trp. 2 *f* *p* *f* *p*

Trp. 3 *p* *sf* *p* *f*

Pos. *p* *mf*

Tb. *p* *mf* *p*

Pk. *pp* *p* *mp* *mf*

Perc. *klingen lassen* *p* *mf* *klingen lassen*

Vi. 1 *p* *mf*

Vi. 2 *mf*

Vi. 3

Vi. 4 *p*

Vi. 5 *p*

Vi. 6 *p*

Vla. 1 *p* *poco a poco cresc.*

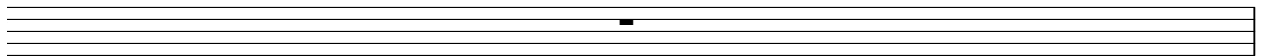
Vla. 2 *pp* *p* *poco a poco cresc.*

Vc. 1 *pp* *p* *p* *mf*

Vc. 2 *mf*

Kb. *p* *poco a poco cresc.* *mf*

vollständige Partitur plus Aufführungs-Material zu beziehen über www.edition49.de



86

Fl. 1 *p* *pp* *p espress.* *f*

Fl. 2 *p* *pp*

Picc. 1 *p* *pp*

Picc. 2 *p* *pp*

Kl. 1 *p espress.* *f*

Kl. 2 *p espress.* *f*

Kl. 3

B.-Kl. *p espress.* *f* *p*

Fg.

Hrn. 1 - 3

Trp. 1 *f* con sord.

Pos.

Tb.

Pk.

VI. 1 *pp* *mf* *pp*

VI. 2 *pp* *mf* *pp*

VI. 3 *pp* *mf* *pp*

VI. 4 *pp* *mf* *pp*

VI. 5 *pp* *mf* *pp*

VI. 6 *pp* *mf* *pp*

Vla. 1 *f* *p*

Vla. 2 *p*

Vc. 1 *f* *pp* *mf* *pp* *p*

Vc. 2 *f* *p* *pp* *mf* *pp* *p*

94

Fl. 1 *sf* *ff* (tenuto)

Fl. 2 *sf* *ff* (tenuto)

Picc. 1 *sf* *ff* (tenuto)

Picc. 2 *sf* *ff* (tenuto)

Kl. 1 *p* *f* *p* *sf* *ff* (tenuto)

Kl. 2 *p* *f* *p* *sf* *ff* (tenuto)

Kl. 3 *p* *f* *p*

B.-Kl. *sf* *ff*

Fg. *sf* *ff*

Hrn. 1 - 3

Trp. 1 *p*

Pos.

Tb. *sf*

Pk. Becken *p* *sf* *L.v. Pauke* *gliss.*

Perc. Tam-Tam *f* *L.v.*

Vi. 1 *p* *cresc.* *mf* *f* *ff* (tenuto) *div.*

Vi. 2 *p* *cresc.* *mf* *f* *ff* (tenuto) *div.*

Vi. 3 *p* *f* *p* *sf* *ff*

Vi. 4 *p* *f* *p* *sf* *ff*

Vi. 5 *p* *f* *p* *sf* *ff*

Vi. 6 *p* *f* *p* *sf* *ff*

Vla. 1 *f* *p* *f* *sf* *ff*

Vla. 2 *f* *p* *f* *sf* *ff*

Vc. 1 *f* *p* *ff*

Vc. 2 *p* *f* *p* *ff*

Kb. *p* *f* *p* *ff*

akzentuierter unregelmäßiger Bogenwechsel mit abnehmender Dichte

110

Fl. 1-4

Kl. 1

Kl. 2

Kl. 3

B.-Kl.

Fg.

Hrn. 1

Hrn. 2

Hrn. 3

Trp. 1

Trp. 2

Trp. 3

Pos.

Tb.

Pk.

Perc.

Becken

pp

VI. 1

VI. 2

VI. 3

VI. 4

VI. 5

VI. 6

Vla. 1

Vla. 2

Vc. 1

Vc. 2

Kb.

115

Fl. 1 *p cresc. molto* *ff*

Fl. 2 *p cresc. molto* *ff*

Picc. 1 *p cresc. molto* *ff*

Picc. 2 *p cresc. molto* *ff*

Kl. 1 *p cresc. molto* *ff*

Kl. 2 *p cresc. molto* *ff*

Kl. 3 *p cresc. molto* *ff*

B.-Kl. *ff*

Fg. *ff*

Hrn. 1 *sf* *p* *ff*

Hrn. 2 *sf* *p* *ff*

Hrn. 3 *sf* *p* *ff*

Trp. 1 *ff*

Trp. 2 *ff*

Trp. 3 *ff*

Pos. *ff*

Tb. *ff*

Pk. *ff*

Perc. Tam-Tam *ff*

VI. 1 *p cresc. molto* *div. ff*

VI. 2 *p cresc. molto* *div. ff*

VI. 3 *p cresc. molto* *ff*

VI. 4 *p cresc. molto* *ff*

VI. 5 *p cresc. molto* *ff*

VI. 6 *p cresc. molto* *ff*

Vla. 1 *sf* *p* *ff*

Vla. 2 *sf* *p* *ff*

Vc. 1 *sf* *p* *ff*

Vc. 2 *ff*

Kb. *ff*

121

The musical score on page 22 includes the following instruments and parts:

- Fl. 1, Fl. 2, Picc. 1, Picc. 2, Fl. 3, Fl. 4
- Kl. 1, Kl. 2, Kl. 3, B.-Kl.
- Fg.
- Hrn. 1, Hrn. 2, Hrn. 3
- Trp. 1, Trp. 2, Trp. 3
- Pos., Tb.
- Pk., Perc.
- VI. 1, VI. 2, VI. 3, VI. 4, VI. 5, VI. 6
- Vla. 1, Vla. 2
- Vc. 1, Vc. 2
- Kb.

Dynamic markings include *f*, *mf*, *p*, and *pp*. The score features complex phrasing with many notes beamed together and various rests. The time signature transitions from 3/4 to 5/4 in the later measures.

127

Fl. 1 *mf* *ppp*

Fl. 2 (Flöte) *mf* *ppp*

Fl. 3 (Flöte) *mf* *ppp*

Fl. 4 *mf* *ppp*

Kl. 1 *pp* *mf* *ppp*

Kl. 2 *mf* *ppp*

Kl. 3 *pp* *mf* *ppp*

B.-Kl. *mf* *ppp*

Fg. *mf* *ppp*

Hrn. 1 - 3

Trp. 1 *con sord.* *p* *mf* *pp*

Trp. 2 *con sord.* *p* *mf* *pp*

Trp. 3 *con sord.* *p* *mf* *pp*

Pos.

Tb.

Pk. Becken mit Bogen gestrichen *pp* *mf* *ppp* ausklingen lassen

Perc. Klangschale *pp* *mf* *ppp* ausklingen lassen

Vi. 1 *p* *pp* *mf* *ppp*

Vi. 2 *p* *pp* *mf* *ppp*

Vi. 3 *pp* *mf* *ppp*

Vi. 4 *pp* *mf* *ppp*

Vi. 5 *pp* *mf* *ppp*

Vi. 6 *pp* *mf* *ppp*

Vla. 1 *p* *mf* *ppp*

Vla. 2 *p* *mf* *ppp*

Vc. 1 *p* *pp* *mf* *ppp*

Vc. 2 *p* *pp* *mf* *ppp*

Kb. *p* *mf* *ppp*